



20<sup>th</sup> IARU  
REGION 1 ARDF  
CHAMPIONSHIPS  
2015

**AUGUST 17–23**

**BULLETIN No. 3**

*Dear fellow friends of sport,  
it gives me a great pleasure to welcome you all in Mariánské Lázně at European ARDF Championship. West Bohemia and its untouched nature is the ideal place for many outdoor activities, radio orienteering included, of course. I would like to wish all the racers to have a good radio waves, fast feet and to make right choices within the race. I hope that not only the race-winners but also all other participants will come off with beautiful, unforgettable experience.*

*Miroslav Nenutil, senator of the Parliament of the Czech Republic*

**Organizer:**

Czech Radio Club (CRC) — Czech ARDF Association.

**Event center:**

Hotel Krakonoš\*\*\*  
Mariánské Lázně 660,  
353 01 Mariánské Lázně,  
Czech Republic  
<http://www.hotelkrakonos.eu/en/>

**Competition rules:**

IARU Region 1 Rules for Championships in Amateur Radio Direction Finding (Part A and Part B), version 2015, apply.

**International Jury:**

- Kai Pastor, DG0YT (DARC, Germany) — chairman,
- PA Nordwaeger, SM0BGU (SSA, Sweden) — member,
- Jacek Czerwinski, SP2LQC (PZK, Poland) — member,
- Ole Garpestad, LA2RR (NRRL, Norway) — member,
- Roussko Roussev, LZ1RT (BFRA, Bulgaria) — member,
- Igor Lazarev, US0VA (UARL, Ukraine) — member,
- Miklos Venczel, HA0LZ (MRASz, Hungary) — member,
- Jiří Pavlů, OK1CHE (CRC, Czech republic) — siting referee,
- Miroslav Vlach, OK1UMY (Czech Republic) — event and technical director,
- Tereza Skládanková (Czech Republic) — secretary of the Jury.

**Assistants to siting referee:**

Martin Baier (classics), Miroslav Vlach (sprint), Jan Michalec (foxoring).

### Accommodation and food:

Hotel Krakonoš — Mariánské Lázně 660, 353 01 Mariánské Lázně

Hotel & Hostel Zlatý Zámek — Klíčova 167/4, 353 01 Mariánské Lázně

Hotel Goethe — Závišín 3, 353 01 Mariánské Lázně

The food provided will be the same at all the hotels and hostel. Teams are accommodated in the facilities according to their preferences stated in the entry form and according to the order in which they sent their entry form. Each team will receive the information for arrival and their stay in the first half of August.

### Terrain characteristics, clothing, weather:

There is alternating continuous and dense forest which is interwoven with a dense network of paths of varying quality. Classics—moderately rugged at an altitude 540–760 m with a number of stones and rocks; Foxoring—hilly at an altitude 540–900 m partly stones and rocks; Sprint—flat. Temperatures in August are typically 20–25 °C, thunderstorms should be expected in this time of the year.

### Embargoed area:

As of release of this Bulletin, only those areas (marked in the map on the right and within the detailed description below) are embargoed with respect to the Championship.

### Registering system:

The electronic registering system SPORTident will be used in the Championship. The teams will indicate the ID of the SI card of each competitor in the registration form. If the competitor does not have a SI card, put rent in place of the ID and he/she will be provided with one for the competitions.





## Maps and locations:

### FOXORING

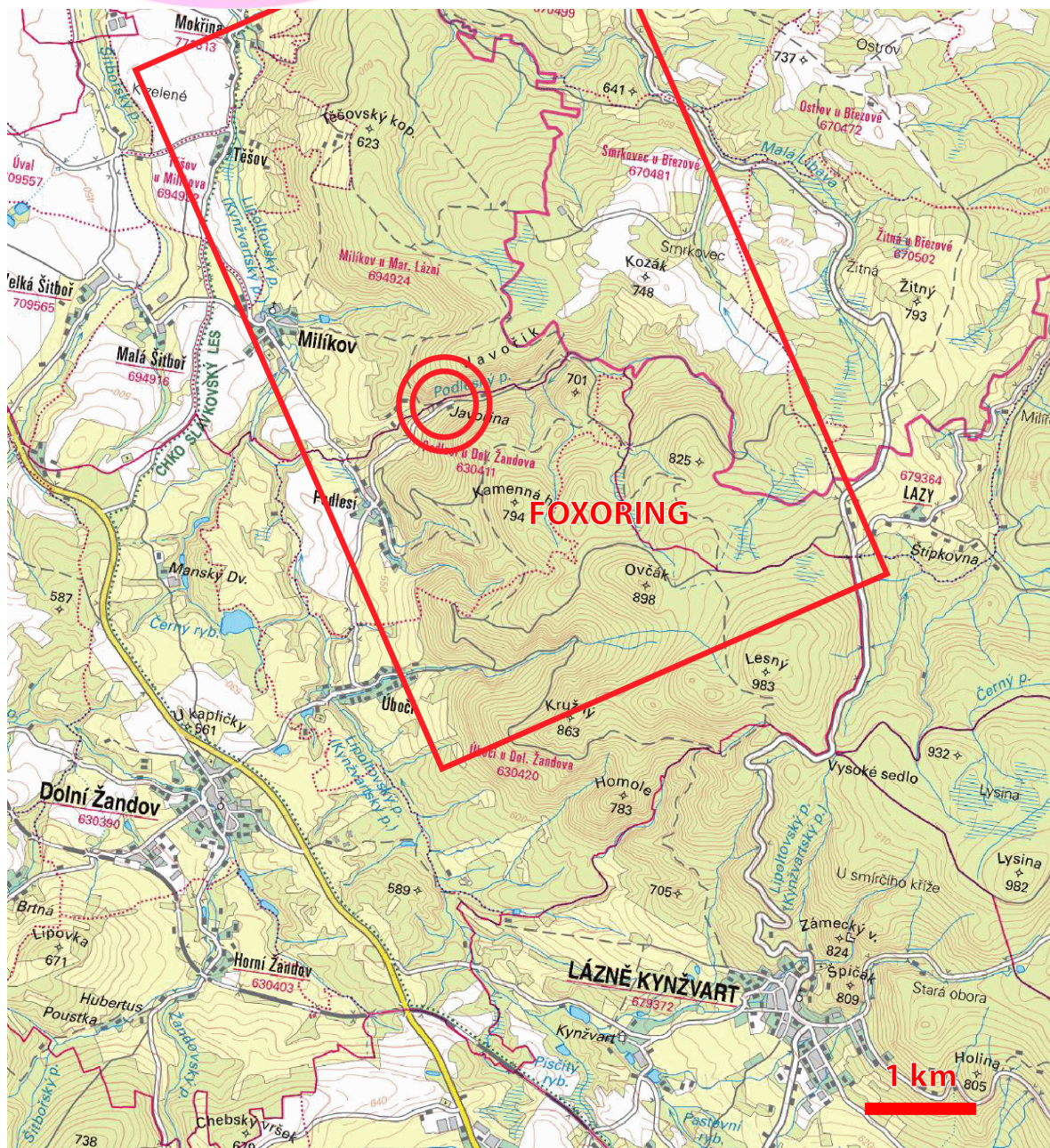
Date: Tuesday, August 18<sup>th</sup>, 2015.

Map: 1:10 000, size A3, contour interval 5 m, IOF, standards, spring 2015.

Map can be folded to 35×25 cm and will be protected against moisture.

Finish: Village of *Javořina*.

Approximate area of the map and location of the finish is depicted below.





## SPRINT

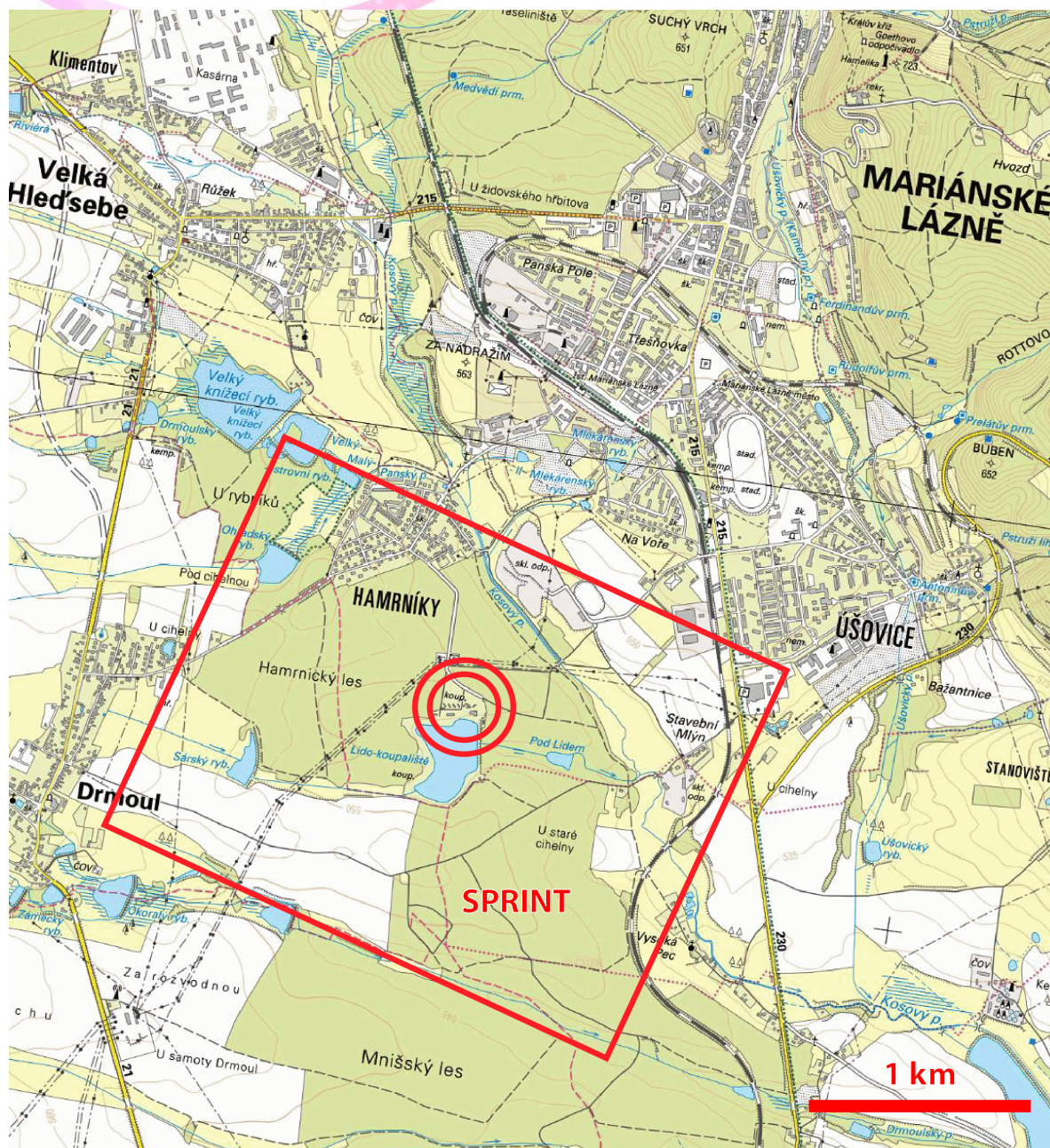
Date: Wednesday, August 19<sup>th</sup>, 2015.

Map: 1:5 000, size A4, contour interval 2 m, IOF, standards, spring 2015.

Map can be folded to 25×20 cm.

Finish: Natural swimming pool (Forest lake "Lido") of *Mariánské Lázně*.

Approximate area of the map and location of the finish is depicted below.





## CLASSICS (BOTH)

Date: Thursday, August 20<sup>th</sup>, 2015.

Map: 1:15 000, size A4, contour interval 5 m, IOF, standards, spring 2015.

Map can be folded to 25×21 cm.

Finish: Besides the village of *Studánka*.

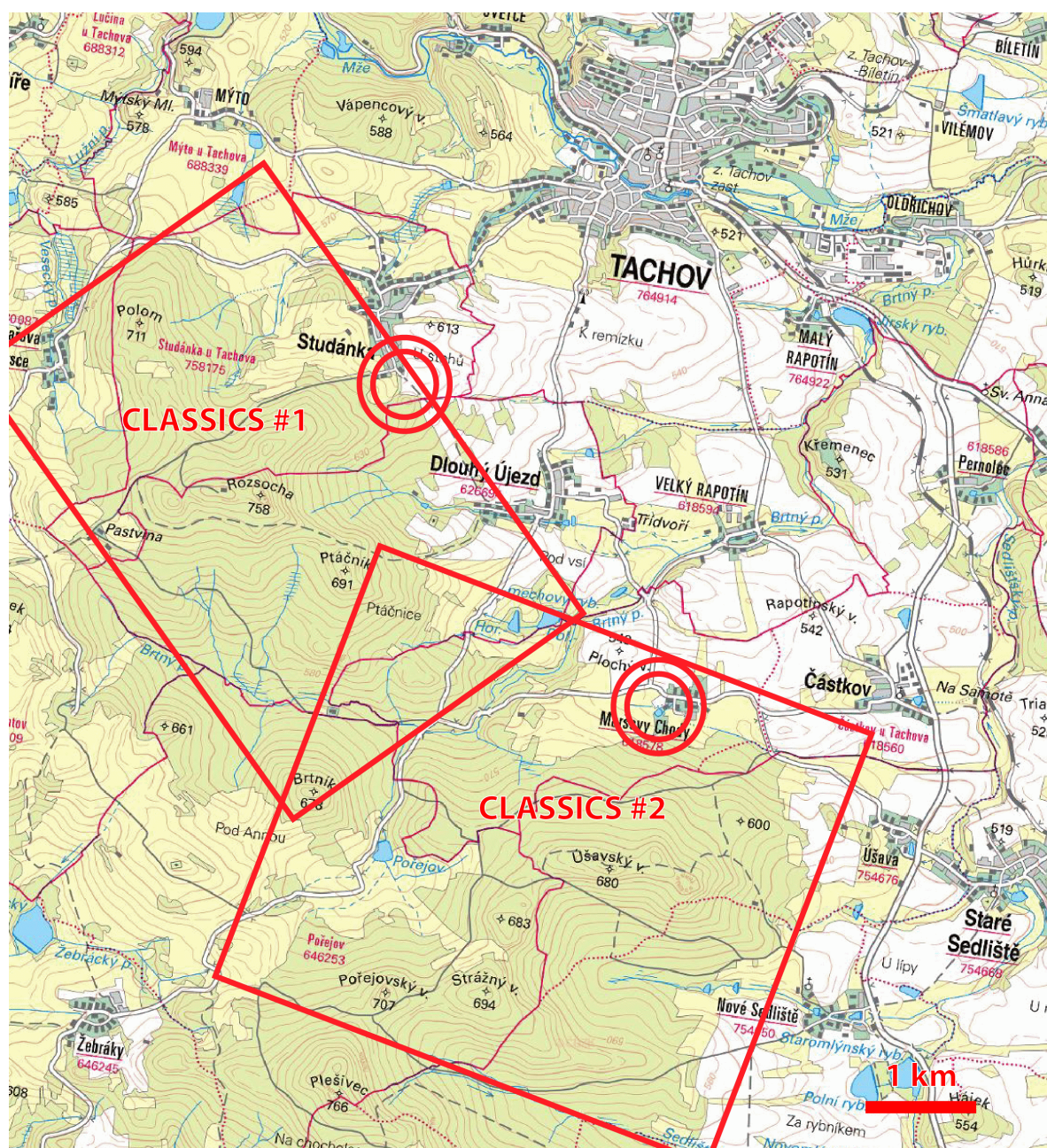
Date: Saturday, August 22<sup>nd</sup>, 2015.

Map: 1:15 000, size A3, contour interval 5 m, IOF, standards, spring 2015.

Map can be folded to 30×25 cm.

Finish: The village of *Maršovy Chody*.

Approximate area of the map and location of the finish is depicted below.





## Detailed Schedule:

### TRAINING CAMP

#### Wednesday, Aug 12<sup>th</sup>, 2015 — Training camp arrival

- 18.00–21.00 arrival and lodging
- 19.00–20.00 dinner

#### Thursday, Aug 13<sup>th</sup>, 2015 — Training camp — both classics (map “Srncí hřbet”)

- 8.00–8.30 breakfast
- 10.00–15.00 self-serviced start/finish (at the same place)
- 12.00–13.00 lunch
- 18.00–19.00 dinner

#### Friday, Aug 14<sup>th</sup>, 2015 — Training camp — foxoring (map “Výhledy”)

- 8.00–8.30 breakfast
- 10.00–13.00 self-serviced start/finish (at the same place)
- 13.00–14.00 lunch
- 18.00–19.00 dinner

#### Saturday, Aug 15<sup>th</sup>, 2015 — Training camp — both classics (map “Výhledy”)

- 8.00–8.30 breakfast
- 10.00–15.00 self-serviced start/finish (at the same place)
- 12.00–13.00 lunch
- 18.00–19.00 dinner

#### Sunday, Aug 16<sup>th</sup>, 2015 — Training camp — sprint (map “Srncí hřbet”)

- 8.00–8.30 breakfast
- 10.00–13.00 self-serviced start/finish (at the same place)
- 13.00–14.00 lunch
- 18.00–19.00 dinner

### CHAMPIONSHIP

#### Monday, Aug 17<sup>th</sup>, 2015 — Championship — arrival and foxoring & sprint training

- before 11.00 check out for those moving to a different accommodation after training camp
- before 14.00 arrival and lodging
- 13.00–14.00 lunch
- 14.00–15.00 meeting of the International Jury
- 15.00–16.30 training — foxoring
- 16.30–18.00 training — sprint (finish close to the Hotel Krakonoš)
- 17.00 transport service from hotels to team leaders meeting
- 17.30–18.00 team leaders meeting (foxoring)

18.00–19.30 dinner

**Tuesday, Aug 18<sup>th</sup>, 2015 — Championship — foxoring & opening ceremony**

7.00–9.00 breakfast

8.30 departure (all hotels) to foxoring — competitors, team leaders

9.30 departure to foxoring — visitors

10.00 start — foxoring

12.00–14.00 lunch (may be prolonged for competitors starting later)

approx. 13.00 International Jury meets in the finish area and approves results

14.30 transport service from hotels to ARDF WG meeting

15.00–17.00 IARU R1 ARDF Working Group meeting #1

17.00 transport service from hotels to team leaders meeting

17.30–18.00 team leaders meeting (sprint)

17.30–19.00 dinner

18.50 & 19.10 transport service from hotels to opening and awarding ceremony

19.30–21.10 opening and awarding ceremony (CRISTAL Palace)

21.15 & 21.35 transport service from opening and awarding ceremony to hotels

21.15–22.00 opening banquet for team leaders and guests (CRISTAL Palace)

22.00 transport service from banquet to hotels

**Wednesday, Aug 19<sup>th</sup>, 2015 — Championship — sprint, classics training**

7.00–9.00 breakfast

8.30 departure (all hotels) to sprint — competitors, team leaders

9.00 departure to sprint — visitors (exact times for hotels will be specified)

10.00 start — sprint

12.00–14.00 lunch

approx. 12.00 International Jury meets in the finish area and approves results

15.00–17.30 training — classics

17.00 transport service from hotels to team leaders meeting

17.30–18.00 team leaders meeting (classic #1)

17.30–19.00 dinner

18.50 & 19.10 transport service from hotels to awarding ceremony

19.30–20.30 awarding ceremony (CRISTAL Palace)

20.30 & 20.50 transport service from awarding ceremony to hotels

**Thursday, Aug 20<sup>th</sup>, 2015 — Championship — classic #1**

6.00–8.00 breakfast

7.30 departure (all hotels) to classic #1 — competitors, team leaders



9.00 departure to classic #1 — visitors  
 10.00 start — classic #1  
 — lunch packet will be distributed during breakfast  
 approx. 15.00 International Jury meets in the finish area and approves results  
 17.30–19.00 dinner  
 18.50 & 19.10 transport service from hotels to awarding ceremony  
 19.30–21.00 awarding ceremony (CRISTAL Palace)  
 21.00 & 21.20 transport service from awarding ceremony to hotels

**Friday, Aug 21<sup>st</sup>, 2015 — Championship — the day off — trips**

7.00–9.00 breakfast  
 9.00 departure for all trips  
 12.00–14.00 lunch (those, on the whole-day trip will get lunch at the spot)  
 15.30 transport service from hotels to ARDF WG meeting  
 16.00–17.30 IARU R1 ARDF Working Group meeting #2  
 17.00 transport service from hotels to team leaders meeting  
 17.30–18.00 team leaders meeting (classic #2)  
 17.30–19.00 dinner  
 19.00–21.00 *IARU R1 ARDF Working Group meeting #2 (continued)*

**Saturday, Aug 22<sup>nd</sup>, 2015 — Championship — classic #2**

6.00–8.00 breakfast  
 7.30 departure (all hotels) to classic #2 — competitors, team leaders  
 9.00 departure to classic #2 — visitors  
 10.00 start — classic #2  
 — lunch packet will be distributed during breakfast  
 approx. 15.00 International Jury meets in the finish area and approves results  
 17.00–18.00 dinner  
 17.50 & 18.10 transport service from hotels to awarding and closing ceremony  
 18.30–20.15 awarding ceremony (CRISTAL Palace)  
 20.20 & 20.40 transport service from awarding and closing ceremony to hotels  
 21.00 & 21.15 transport service from hotels to Hamfest  
 21.00–01.00 Hamfest (Krakonoš)  
 23.30 & 00.30 &  
 01.00 & 01.20 transport service from Hamfest to hotels

**Sunday, Aug 23<sup>rd</sup>, 2015 — Championship — departure**

7.00–9.00 breakfast  
 before 11.00 check-out & departure (all hotels)

### **Bands for classics and categories:**

On the 1<sup>st</sup> classic the categories M19, M21, M40, W19 and W21 run on the 144 MHz band and categories M50, M60, M70, W35, W50, W60 run on the 3,5 MHz band.

The second classic is vice versa – categories M19, M21, M40, W19 and W21 run on 3,5 MHz band; M50, M60, M70, W35, W50, W60 run on 144 MHz band.

### **Ban on most telecommunication equipment**

Please be reminded that most of the telecommunication equipment is forbidden in the competitions and start areas, including (but not limited to) mobil phones, wireless headphones, WiFi-enabled cameras, advanced smartwatches.

### **Summary of “Team leaders meetings”:**

Team leaders’ meetings are scheduled at 17.30 on the days prior to competitions. The meetings will take place at the event center in Hotel Krakonoš.

### **Summary of “Jury meetings”:**

Jury will meet on the first day (Monday) in hotel Krakonoš and right after each competition in finish area, see schedule. Instructions for the following competition will be discussed at the meeting in the finish area of the at the time concluded competition.

### **Summary of “ARDF R1 working group meetings”:**

ARDF WG meetings are planned on Tuesday and Friday afternoons, see schedule. They will take place at the event center in Hotel Krakonoš.

### **Note on transport service**

Buses will be provided for more comfortable transportation between hotels and the event centre / ceremony venue.

### **Buses for visitors**

The bus for visitors will be leaving at given time from the event centre and circulate around the other hotels in Mariánské Lázně. The schedule of the buses will be specified in Bulletin nr. 4.



## Participants:

country	foxoring	sprint	classic #1	classic #2
Belarus	5	5	5	5
Belgium	4	4	10	10
Croatia	2	2	2	2
Denmark	2	1	2	2
Estonia	5	3	5	5
Finland	3	3	3	3
France	3	2	4	4
Germany	23	23	24	24
Hungary	16	16	16	16
Kazakhstan	4	4	4	4
Lithuania	1	1	11	11
Netherlands	5	5	5	5
Norway	2	2	2	2
Poland	18	18	18	18
Romania	4	4	4	4
Russia	33	33	33	33
Serbia	7	7	8	8
Slovakia	18	17	19	17
Slovenia	-	-	12	12
Sweden	9	9	9	9
Switzerland	3	2	3	3
Ukraine	20	21	21	21
United Kingdom	9	9	9	9
Czech Republic	32	32	32	32
<b>S U M</b>	<b>228</b>	<b>223</b>	<b>261</b>	<b>259</b>

category	foxoring	sprint	classic #1	classic #2
M19	16	16	19	19
M21	30	30	37	37
M40	36	35	41	39
M50	31	29	35	35
M60	24	25	29	29
M70	15	14	20	20
W19	15	15	15	15
W21	20	20	22	22
W35	14	14	15	15
W50	16	15	17	17
W60	11	10	11	11

### Registration:

For all participants (competitors, team officials, visitors) full names, passport or ID card number (for visa and accommodation/registration purposes).

For each competitor: category, date of birth, and SI card ID.

Registration form can be downloaded from the event website and shall be sent via email before **August 9**, 2015, if possible, certainly not later than by August 16, 2015. Late registration cannot be accepted unless approved by the organizer and the International Jury.

### Note on the starting groups

In the registration form the team has the chance to indicate in which starting group should the specific competitor start. There are 3 starting groups – early, middle late. In the form you can mark this with numbers 1 (early), 2 (middle) and 3 (late). If not marked, the competitors will be put into the starting groups according to their order on the registration form.

If you do not wish to specify the starting group for a competitor, but the competitor will take part in the competition, put X in the registration form in the proper cell. If there is no number nor an X it shall mean that the competitor is not taking part in that competition.

### European ARDF Championship for the Blind:

We deeply regret to announce that we will not organize the European Championship for the Blind. Unfortunately, just a negligible number of participants expressed their intention to take part in it.



### Bulletin No. 4:

Next bulletin will be released upon beginning of the event, i.e., on August 17<sup>th</sup> 2015.



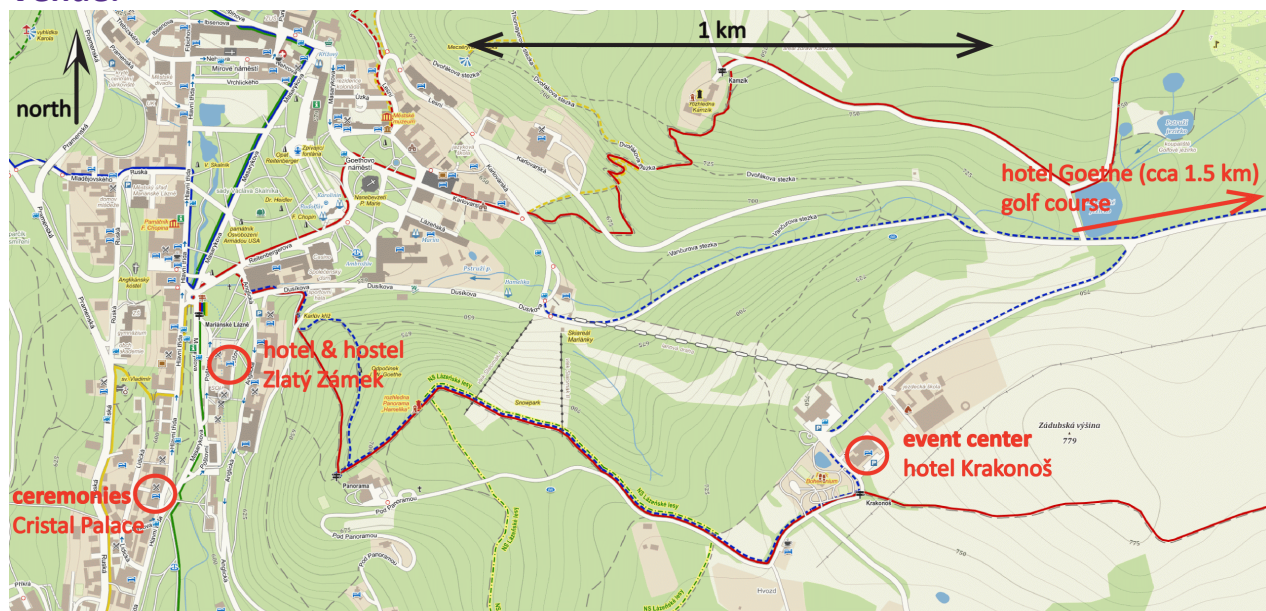
**Contact:**

Czech ARDF Association  
EC 2015 organizing committee  
Zátopkova 100/2  
P.O. Box 40  
Prague 6 – Strahov  
CZ-16017  
Czech Republic



email: [info@ardf2015.cz](mailto:info@ardf2015.cz)  
web: <http://www.ardf2015.cz/>  
phone: + 420 777 238 227

**Venue:**



Partners & Sponsors:



Media partners



With support from:

HOTEL CRISTAL PALACE



MARIÁNSKÉ  
LÁZNĚ  
MARIENBAD



MINISTRY OF EDUCATION,  
YOUTH AND SPORTS

Partners:



měřicí technika - morava  
messtechnik - moravia  
measurement technic - moravia

LEKRAM W  
a.s.



Lekárna Evropská  
Váš pomocník na cestě ke zdraví

